



## LINEAR LED

### VELISTI-TX Series

**VELISTI-TX** series linear LED fixtures of have an innovative design.

They are **IP66** rated and have **excellent durability**. They are made of anodized aluminum and are suitable for use in extreme adverse environments.

They are lightweight with thin profile. They are produced in various length and performance versions as well as 6 light beam versions to provide the ideal lighting solution in every case of height and installation grid density.

Their performance reaches up to **184 lm/W** and have luminous flux of up to **16555lm**.

They are easily installed with a snap fit into their special fixing pieces.

Optionally, they have DALI or 1-10V dimming feature and emergency operation for up to 3 hours .

They have a lumen maintenance factor of L80B10> 80000 hours of operation.

The VELISTI-TX series LED fixtures have a factory **warranty of 5 years which can be extended to 8 years**.

DALI

0-10V

Em 3h

BLUE  
TOOTH

DIM to  
WARM

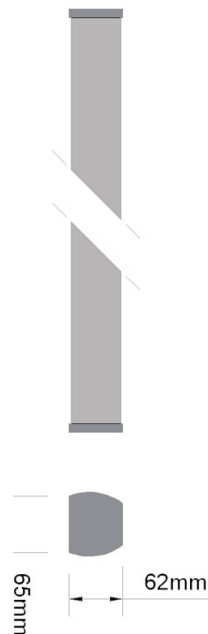
TUNABLE  
CCT



Manufactured in Greece



### Dimensions



### Pros

- Low working temperature
- It produces little heat compared to other types of lighting
- Requires no maintenance
- Long life - 5 years warranty
- Easy installation
- High reliability
- Excellent performance with low power consumption
- High brightness
- High color rendering
- Instant start - immediate termination
- It does not emit UV or IR radiation
- Does not contain mercury
- Resistance to shock and vibration



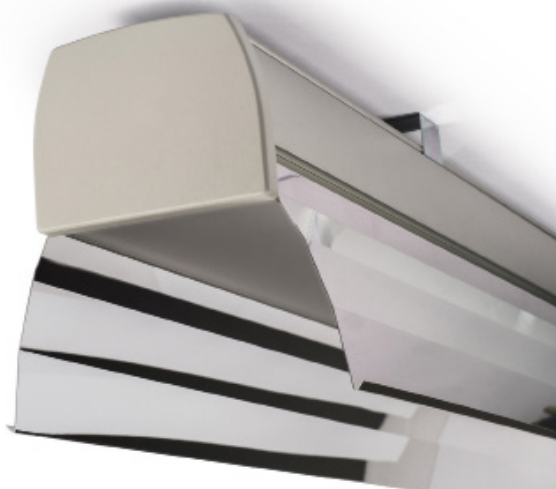


Model	VELISTI-TX
Luminous Flux	1559 lm - 16555 lm
Power	10W - 100W
Ambient Temperature	-30 °C - + 50 °C
Efficacy	156 - 184 lm/W
Power Factor	0,95
LF ripple	5% (5y warranty) / (3% 8y warranty)
L80F10	>72000h
CRI	80
CCT	3000K - 5000K (2700K & 6500K on demand)
IP Rating	IP66
Body	IK09
Finishing	Anodized Alluminium/Powder Coating
Dimensions	62mm x 65mm x (300 - 3000)mm
Light Beam	40° -120°, asym & batwing
Weight	0.6 - 4.5 Kg
Warranty	5 years
Compliances:	CE EN 60598-1:2021+A11:2022 EN 60598-2-1:2022 EN IEC 61000-3-2:2019+A1:2021 EN 61000-3-3:2013+A2:2021 EN 61547:2020 EN 55015:2019+A11:2020 EN 62471:2008 IEC/TR 62778:2014 EN 62493:2015+A1:2022 EN 63000:2018 Directive (LVD) 2014/35/EU Directive (EMC) 2014/30/EU Directive (RoHS) 2011/65/EC Directive (REACH) 2015/863/EU Directive (EuP) 2009/125/EC Directive (GPS) 2001/95/EU

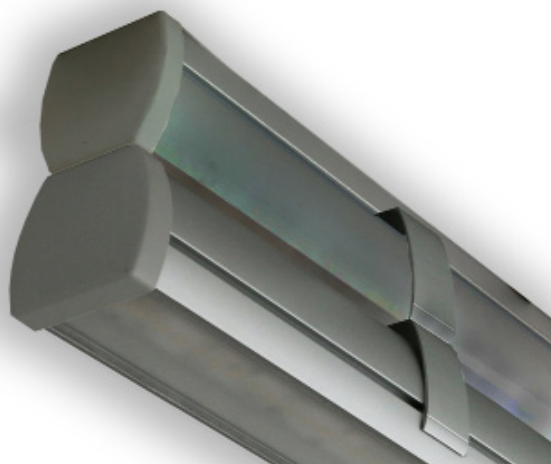
VELISTI-TX Versions					
Watt	Code	CCT	CRI	Lumen	Lm/W
<b>10W</b>	VELISTI-30-TX-830-10	3000	80	1559	156
	VELISTI-30-TX-840-10	4000	80	1640	164
	VELISTI-30-TX-850-10	5000	80	1656	166
<b>18W</b>	VELISTI-60-TX-830-18	3000	80	3119	173
	VELISTI-60-TX-840-18	4000	80	3279	182
	VELISTI-60-TX-850-18	5000	80	3311	184
<b>27W</b>	VELISTI-85-TX-830-27	3000	80	4678	173
	VELISTI-85-TX-840-27	4000	80	4919	182
	VELISTI-85-TX-850-27	5000	80	4967	184
<b>36W</b>	VELISTI-115-TX-830-36	3000	80	6238	173
	VELISTI-115-TX-840-36	4000	80	6558	182
	VELISTI-115-TX-850-36	5000	80	6622	184
<b>49W</b>	VELISTI-142-TX-830-49	3000	80	7797	159
	VELISTI-142-TX-840-49	4000	80	8262	169
	VELISTI-142-TX-850-49	5000	80	8278	169
<b>59W</b>	VELISTI-170-TX-830-59	3000	80	9357	159
	VELISTI-170-TX-840-59	4000	80	9837	167
	VELISTI-170-TX-850-59	5000	80	9933	168
<b>69W</b>	VELISTI-200-TX-830-69	3000	80	10916	158
	VELISTI-200-TX-840-69	4000	80	11477	166
	VELISTI-200-TX-850-69	5000	80	11589	168
<b>79W</b>	VELISTI-225-TX-830-79	3000	80	12476	158
	VELISTI-225-TX-840-79	4000	80	13116	166
	VELISTI-225-TX-850-79	5000	80	13244	168
<b>89W</b>	VELISTI-255-TX-830-89	3000	80	14035	158
	VELISTI-255-TX-840-89	4000	80	14756	166
	VELISTI-255-TX-850-89	5000	80	14900	157
<b>100W</b>	VELISTI-282-TX-830-100	3000	80	15595	156
	VELISTI-282-TX-840-100	4000	80	16395	164
	VELISTI-282-TX-850-100	5000	80	16555	166

## Accessories

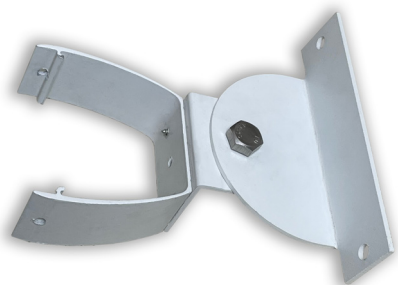
### Shaders



### Up/down joints

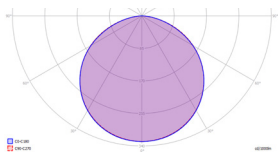


### Wall / Floor Bracket

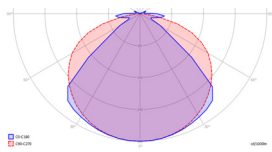


## Polar Intensity Diagram

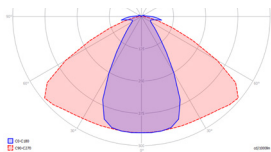
120°



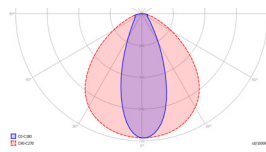
90°



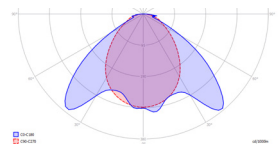
60°



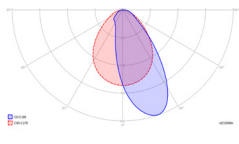
40°



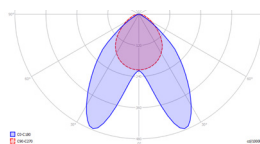
Batwing



asymmetric





double asymmetric



**AFOI TSIOLAKI & SIA OE G.P.**  
Industrial Zone of Thessaloniki  
Greece  
T: +302310 798 335  
F: +302310 799 868

e-mail: [info@techlumen.gr](mailto:info@techlumen.gr)  
[www.techlumen.gr](http://www.techlumen.gr)

 [facebook.com/Techlumen](https://facebook.com/Techlumen)  
 [@Techlumen](https://twitter.com/Techlumen)  
 [linkedin.com/company/tsiolakis-construction](https://linkedin.com/company/tsiolakis-construction)