



## LINEAR LED

### VELISTI-T Series

**VELISTI-T** series linear LED fixtures of have an innovative design.

They are **IP66** rated and have **excellent durability**. They are made of anodized aluminum and are suitable for use in extreme adverse environments.

They are lightweight with thin profile. They are produced in various length and performance versions as well as 6 light beam versions to provide the ideal lighting solution in every case of height and installation grid density.

Their performance reaches up to **185 lm/W** and have luminous flux of up to **10450lm**.

They are easily installed with a snap fit into their special fixing pieces.

Optionally, they have DALI or 1-10V dimming feature and emergency operation for up to 3 hours .

They have a lumen maintenance factor of L80B10> 80000 hours of operation.

The **VELISTI-T** series LED fixtures have a factory **warranty of 5 years which can be extended to 8 years.**

DALI

0-10V

Em 3h

BLUE  
TOOTH

DIM to  
WARM

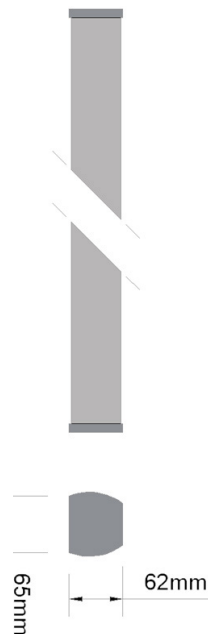
TUNABLE  
CCT



Manufactured in Greece



### Dimensions



### Pros

- Low working temperature
- It produces little heat compared to other types of lighting
- Requires no maintenance
- Long life - 5 years warranty
- Easy installation
- High reliability
- Excellent performance with low power consumption
- High brightness
- High color rendering
- Instant start - immediate termination
- It does not emit UV or IR radiation
- Does not contain mercury
- Resistance to shock and vibration



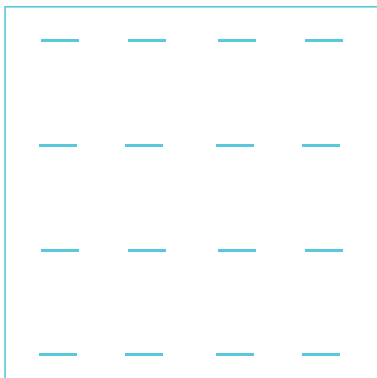




Model	VELISTI-T
Luminous Flux	900 lm - 10450 lm
Power	5.7W - 56.5W
Ambient Temperature	-30 °C - + 50 °C
Efficacy	173 - 185 lm/W
Power Factor	0,95
LF ripple	5% (5y warranty) / (3% 8y warranty)
L80F10	>72000h
CRI	80
CCT	3000K - 5000K
IP Rating	IP66
Body	IK09
Finishing	Anodized Aluminium/Powder Coating
Dimensions	62mm x 65mm x (300 - 3000)mm
Light Beam	40° -120°, asym & batwing
Weight	0.6 - 4.5 Kg
Warranty	5 years
Compliances:	CE EN 60598-1:2021+A11:2022 EN 60598-2-1:2022 EN IEC 61000-3-2:2019+A1:2021 EN 61000-3-3:2013+A2:2021 EN 61547:2020 EN 55015:2019+A11:2020 EN 62471:2008 IEC/TR 62778:2014 EN 62493:2015+A1:2022 EN 63000:2018 Directive (LVD) 2014/35/EU Directive (EMC) 2014/30/EU Directive (RoHS) 2011/65/EC Directive (REACH) 2015/863/EU Directive (EuP) 2009/125/EC Directive (GPS) 2001/95/EU

VELISTI-T Versions					
Watt	Code	CCT	CRI	Lumen	Lm/W
<b>5.7W - 30cm</b>	VELISTI-30-T-830-6	3000	80	979	173
	VELISTI-30-T-840-6	4000	80	1025	181
	VELISTI-30-T-850-6	5000	80	1045	185
<b>11.3W - 60cm</b>	VELISTI-60-T-830-12	3000	80	1958	173
	VELISTI-60-T-840-12	4000	80	2050	181
	VELISTI-60-T-850-12	5000	80	2090	185
<b>17.0W - 85cm</b>	VELISTI-85-T-830-17	3000	80	2937	173
	VELISTI-85-T-840-17	4000	80	3075	181
	VELISTI-85-T-850-17	5000	80	3135	185
<b>22.6W - 115cm</b>	VELISTI-115-T-830-23	3000	80	3916	173
	VELISTI-115-T-840-23	4000	80	4100	181
	VELISTI-115-T-850-23	5000	80	4180	185
<b>28.3W - 142cm</b>	VELISTI-142-T-830-28	3000	80	4895	173
	VELISTI-142-T-840-28	4000	80	5125	181
	VELISTI-142-T-850-28	5000	80	5225	185
<b>34.0W - 170cm</b>	VELISTI-170-T-830-34	3000	80	5874	173
	VELISTI-170-T-840-34	4000	80	6150	181
	VELISTI-170-T-850-34	5000	80	6270	185
<b>39.6W - 200cm</b>	VELISTI-200-T-830-40	3000	80	6853	173
	VELISTI-200-T-840-40	4000	80	7175	181
	VELISTI-200-T-850-40	5000	80	7315	185
<b>45.2W - 225cm</b>	VELISTI-225-T-830-45	3000	80	7832	173
	VELISTI-225-T-840-45	4000	80	8200	181
	VELISTI-225-T-850-45	5000	80	8360	185
<b>51.0W - 255cm</b>	VELISTI-255-T-830-51	3000	80	8811	173
	VELISTI-255-T-840-51	4000	80	9225	181
	VELISTI-255-T-850-51	5000	80	9405	185
<b>56.5W - 282cm</b>	VELISTI-282-T-830-57	3000	80	9790	173
	VELISTI-282-T-840-57	4000	80	10250	181
	VELISTI-282-T-850-57	5000	80	10450	185

## Performance Guide

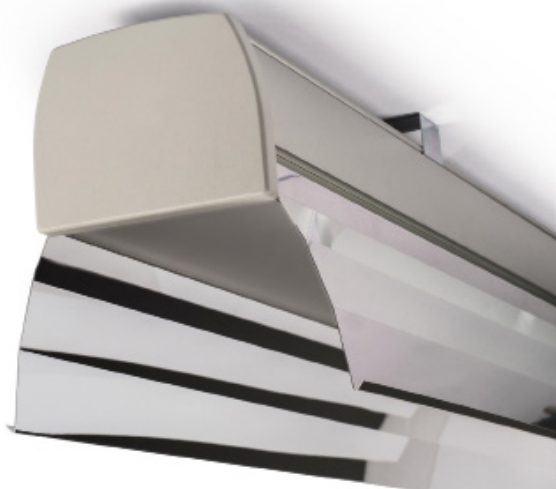


Fixture	VELISTI-282-T-750-57
Illuminance	324lx
Uniformity	0.60
Spacing	6.25m X 6.25m
Maintenance	0.8
Reflectance	50/30/20
Mounting Height	4.0m
Working plane	0.8m

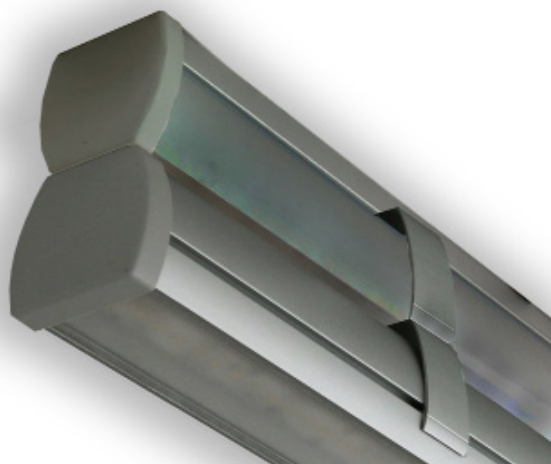


## Accessories

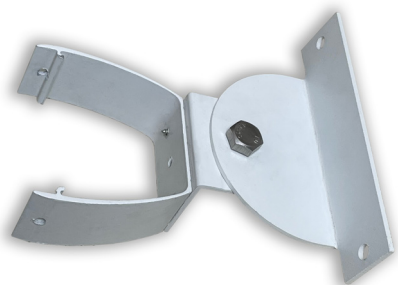
### Shaders



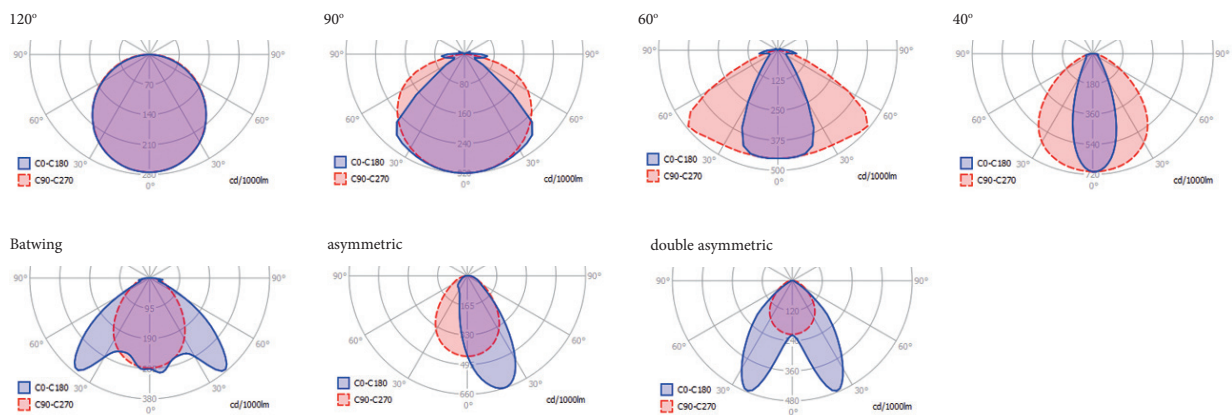
### Up/down joints



### Wall / Floor Bracket






## Polar Intensity Diagram



**AFOI TSIOLAKI OE**  
 Industrial Zone of Thessaloniki  
 Greece  
 T: +302310 798 335  
 F: +302310 799 868

e-mail: [info@techlumen.gr](mailto:info@techlumen.gr)  
[www.techlumen.gr](http://www.techlumen.gr)

 [facebook.com/Techlumen](https://facebook.com/Techlumen)  
 [@Techlumen](https://twitter.com/Techlumen)  
 [linkedin.com/company/tsiolakis-construction](https://linkedin.com/company/tsiolakis-construction)