



Waterproof LED spot

SP-V series

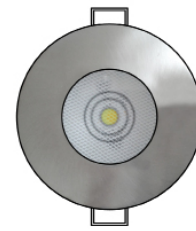
SP-V LED spot, is produced in a great range of versions with a variety of power, color temperature, CRI and beam angle.

They are IP45 rated and can be used even in damp spaces. The low power version of 3W produces 430lm at 5000K, while the high power version of 9W has an output of 1580 lumens and efficacy of 174 lm/W.

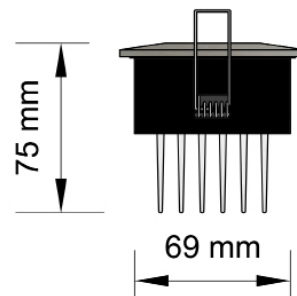
The beam angle is chosen from selection 13° to 49° and meets different architectural scenarios.

SP-V has L80 rating > 70000h, and 5 years warranty.

Dimensions

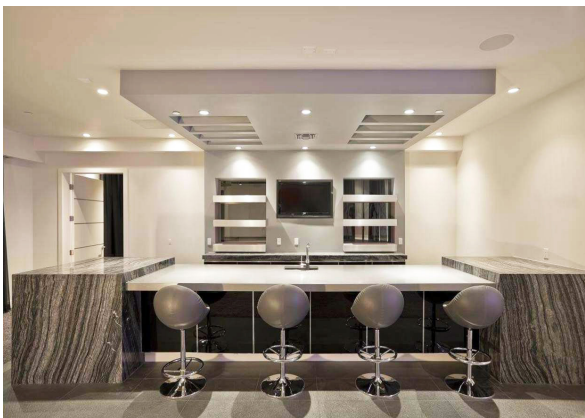


82 mm



75 mm

69 mm



Manufactured in Greece



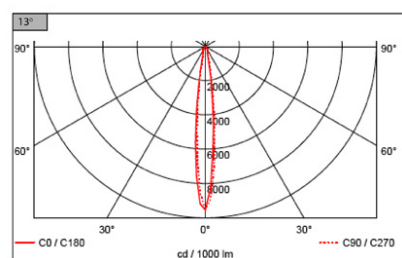
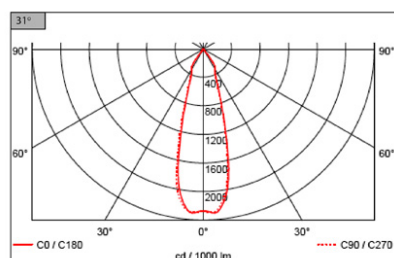
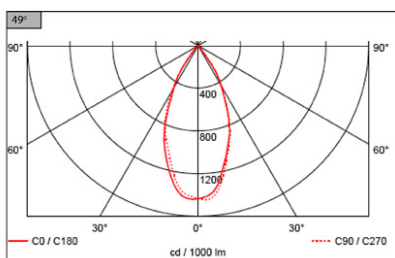
Applications

- Shops
- Offices
- Galleries
- Restaurants
- Bars
- Houses
- Bathrooms
- Gyms

Type	SP-V
Luminus Power	285 lm - 1580 lm
Power	3W - 9W
Driver	Meanwell
LED Chip	Bridgelux V6, V8, Vero 10
Consumption	0.003 -0.009 KWh/h
Ambient Temperature	-30 °C - + 40 °C
Efficacy	91 - 174 lm/W
Power Factor	0,95
CRI	70 - 90
CCT	2700K - 6500K
IP Rating	IP45
Body	Alluminium
Finishing	Nickel - RAL selection
Dimensions	Φ82mm x H65mm
Cut-out	Φ70mm - Φ80mm
Beam Angle	13°, 31°, 49°
Weight	0.4 Kg
Warranty	5 years
Approvals:	CE, EN 60598-1 EN 13032.01 EN 61439-1:2009 EN 61543:1995 2006/95/EC 2004/108/EC EN 60598-2-2 Rohs

SP-V Versions					
Watt	Code	CCT	CRI	Lumen	Lm/W
3W	SP-V-927-3	2700	90	285	91
	SP-V-827-3	2700	80	350	112
	SP-V-930-3	3000	90	310	100
	SP-V-830-3	3000	80	365	117
	SP-V-840-3	4000	80	405	130
	SP-V-850-3	5000	80	390	125
	SP-V-750-3	5000	70	430	138
	SP-V-927-6	2700	90	590	95
	SP-V-827-6	2700	80	740	119
	6W	SP-V-930-6	3000	90	625
SP-V-830-6		3000	80	785	126
SP-V-940-6		4000	90	670	108
SP-V-840-6		4000	80	820	132
SP-V-850-6		5000	80	820	132
SP-V-750-6		5000	70	865	139
SP-V-827-9		2700	80	1332	146
SP-V-927-9		2700	90	1111	122
SP-V-830-9		3000	80	1388	153
SP-V-930-9		3000	90	1152	127
9W	SP-V-835-9	3500	80	1430	157
	SP-V-935-9	3500	90	1194	131
	SP-V-840-9	4000	80	1444	159
	SP-V-940-9	4000	90	1236	136
	SP-V-750-9	5000	70	1580	174
	SP-V-850-9	5000	80	1486	163
	SP-V-950-9	5000	90	1264	139
	SP-V-757-9	5700	70	1525	168
	SP-V-857-9	5700	80	1511	166
	SP-V-765-9	6500	70	1553	171
SP-V-865-9	6500	80	1538	169	

Polar Intensity Diagram



ΕΛΟΤ EN 60598-1
ΕΛΟΤ EN 13032.01
EN 61439-1:2009
EN 61543:1995



AFOI TSIOLAKI OE
Industrial Zone of Thessaloniki
Greece
T: +302310 798 335
F: +302310 799 868

e-mail: info@techlumen.gr
www.techlumen.gr

[facebook.com/techlumenledlightingen](https://www.facebook.com/techlumenledlightingen)
[@Techlumen](https://twitter.com/Techlumen)
[linkedin.com/company/tsiolakis-construction](https://www.linkedin.com/company/tsiolakis-construction)