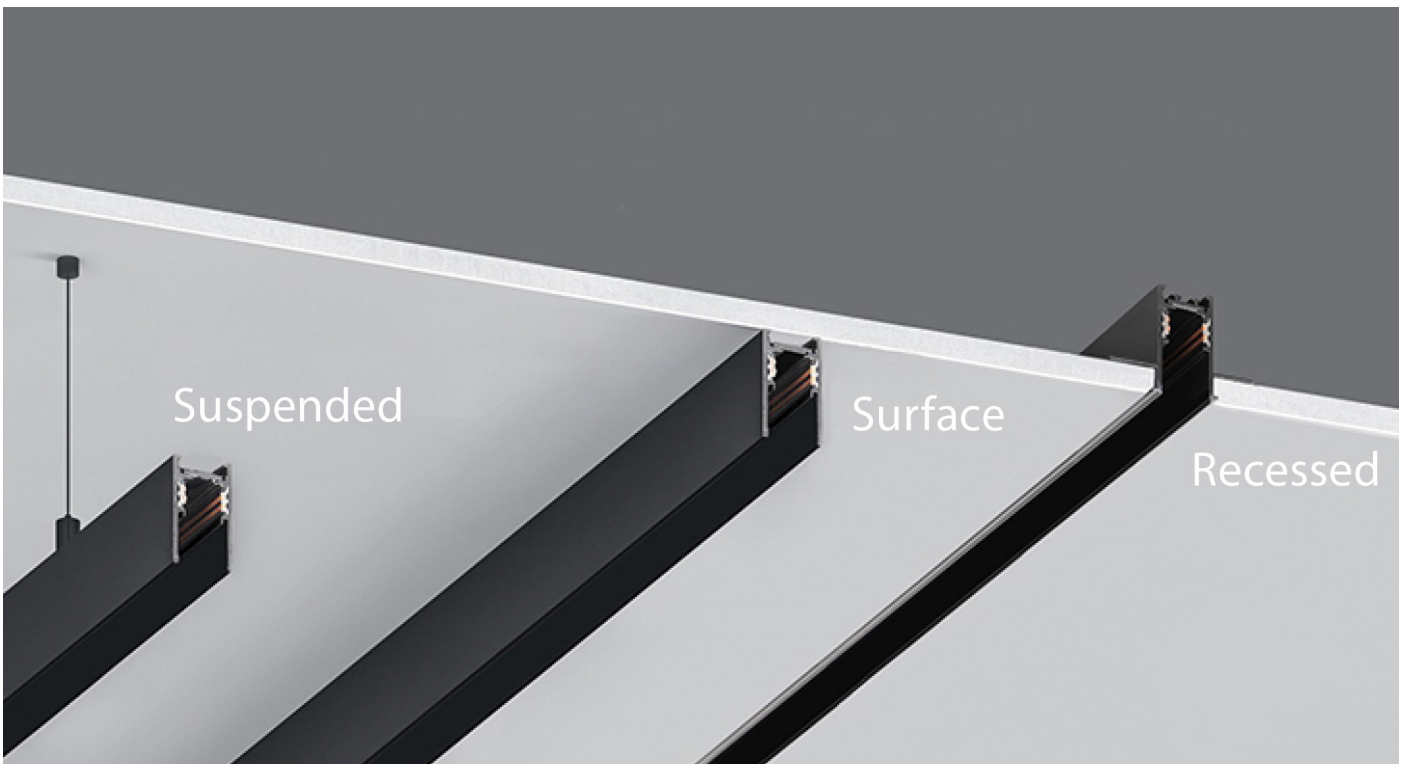
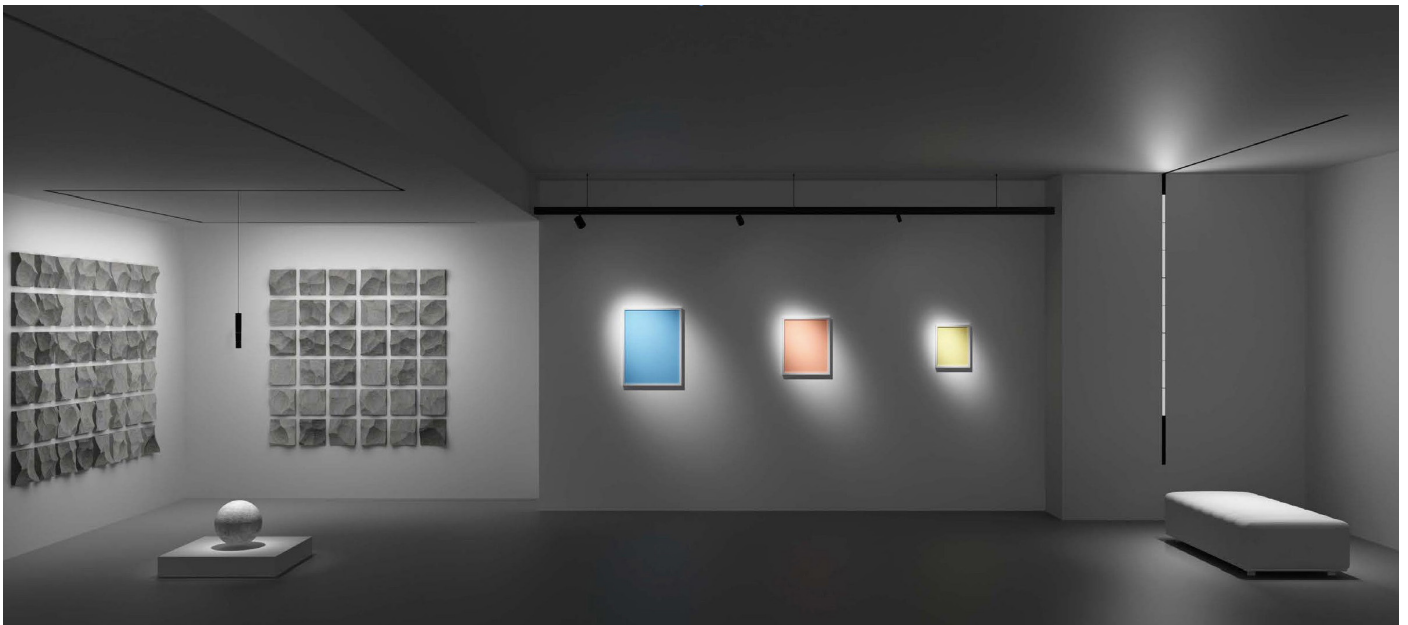
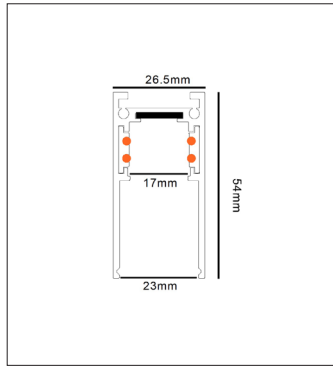
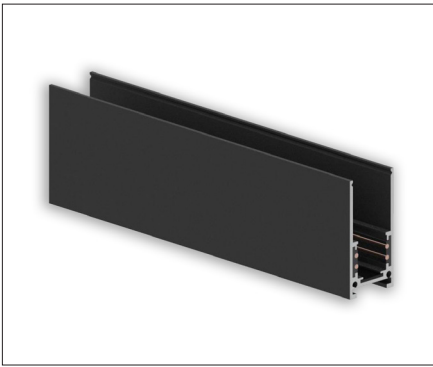


MG-20 Low Voltage Magnet Track System

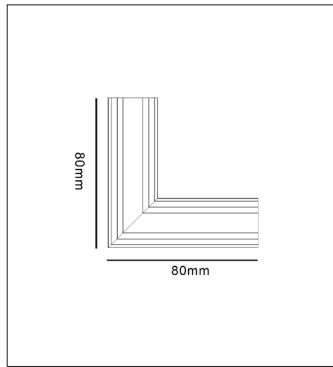
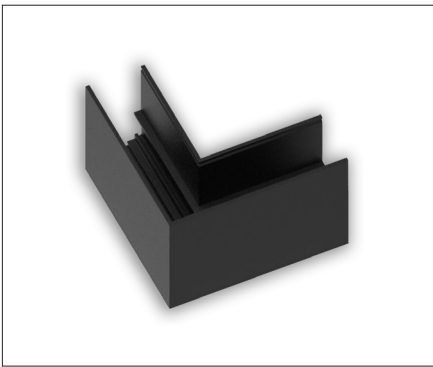




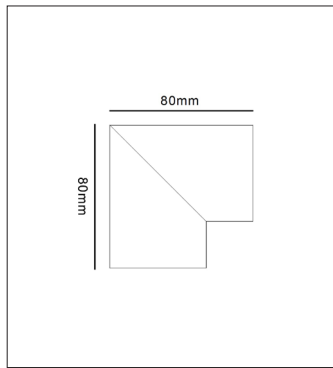
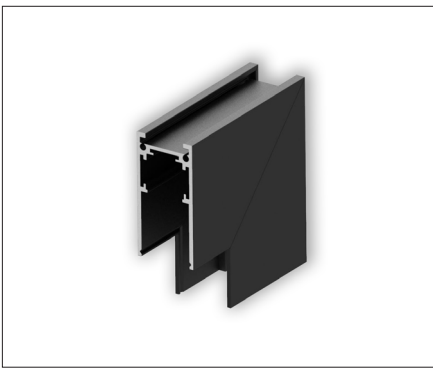
MG-20-A Magnet Track (Surface Mounted)



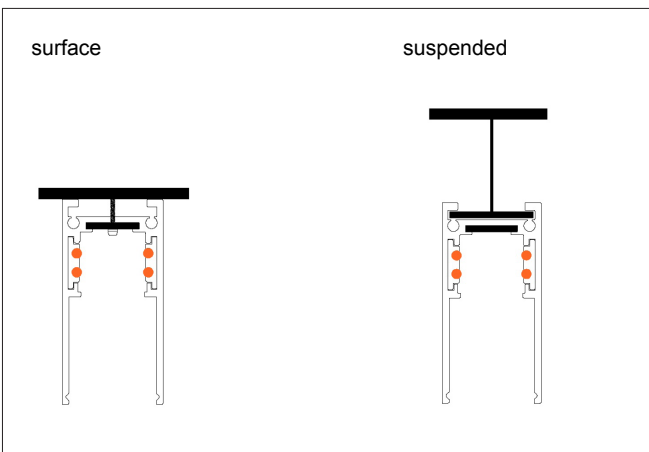
MG-211-20-A L-connector (Horizontal)



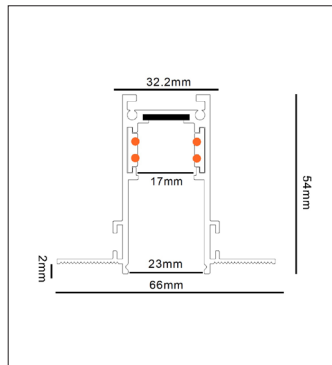
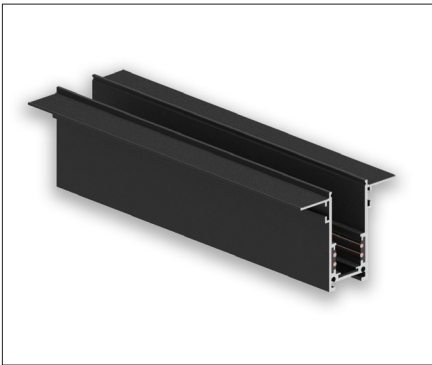
MG-212-20-A L-connector (Vertical)



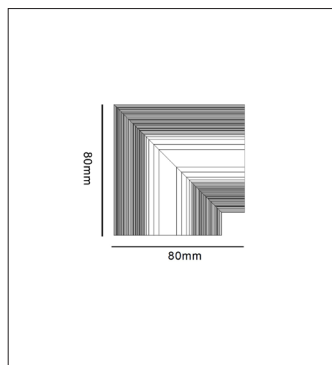
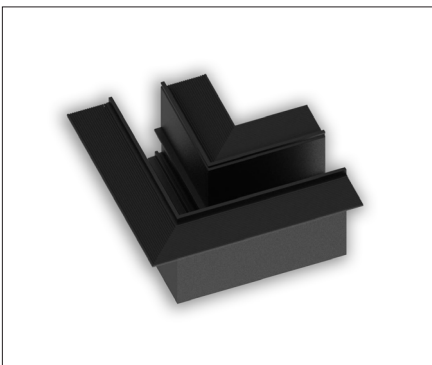
Installation



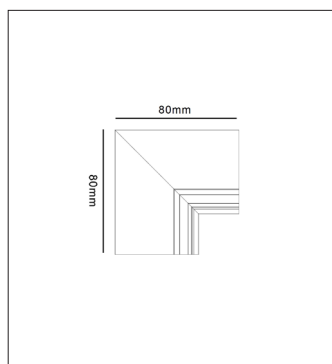
MG-20-B Magnet Track (Trimless - Type 1)



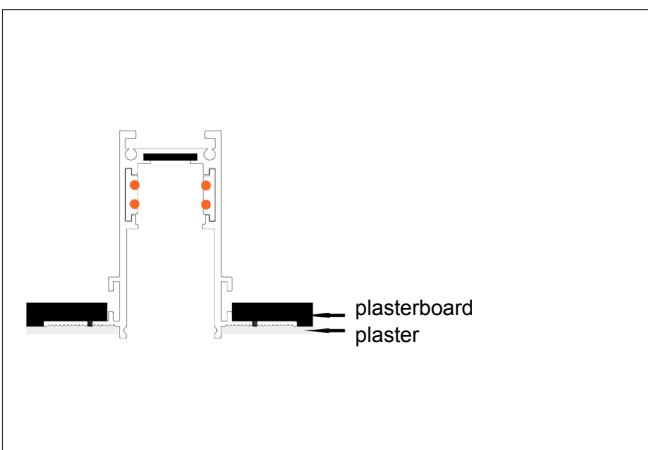
MG-211-20-B L-connector (Horizontal)



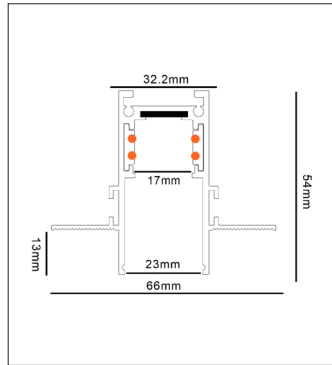
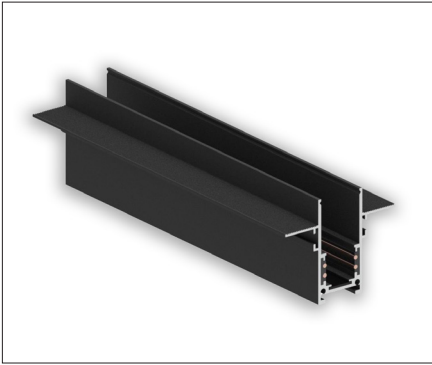
MG-212-20-B L-connector (Vertical)



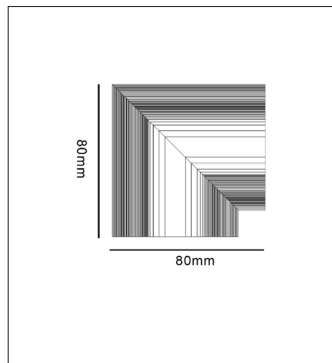
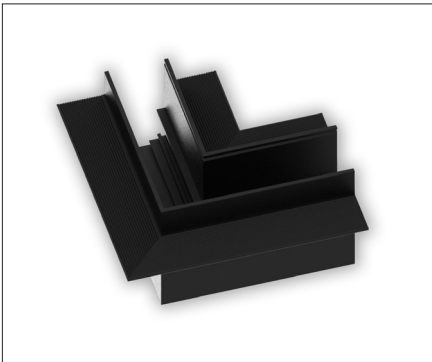
Installation



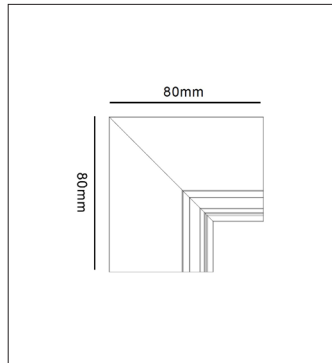
MG-20-C Magnet Track (Trimless - Type 2)



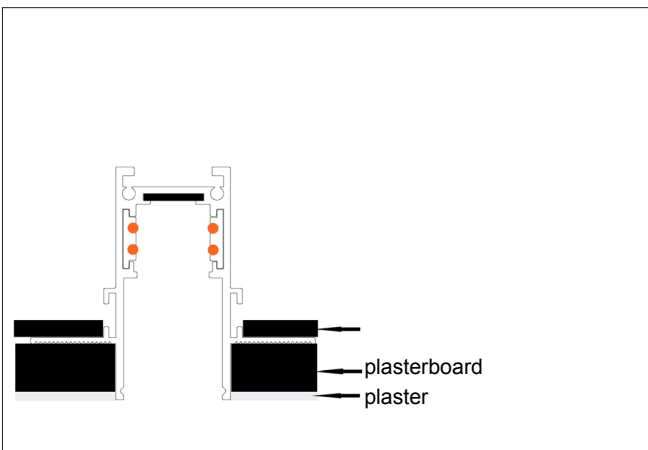
MG-211-20-C L-connector (Horizontal)



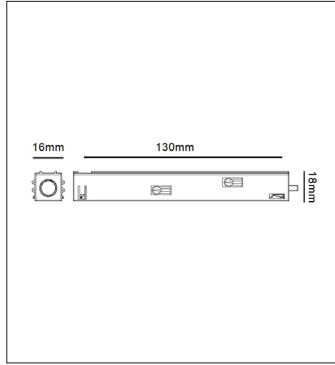
MG-212-20-C L-connector (Vertical)



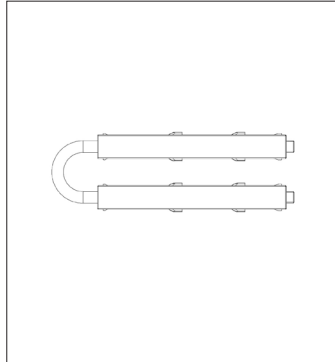
Installation



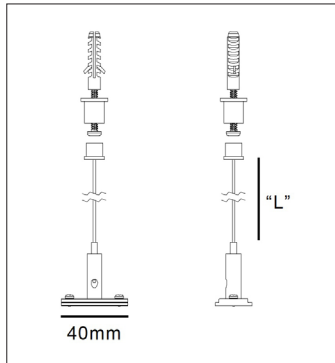
MG-312 Power Connector



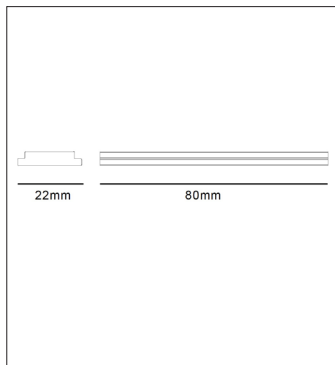
MG-313 Power Double Connector Flexible



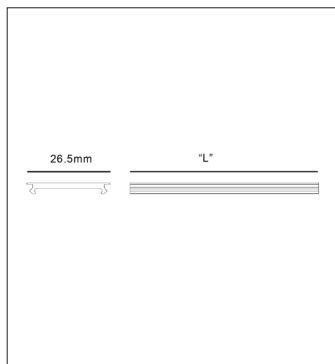
MG-391 Suspension



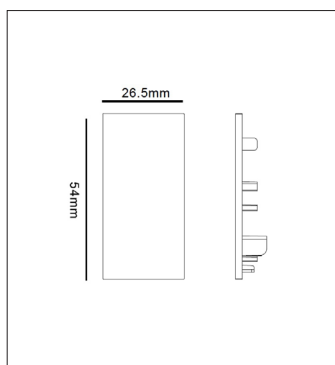
MG-212-20-C L-connector (Vertical)



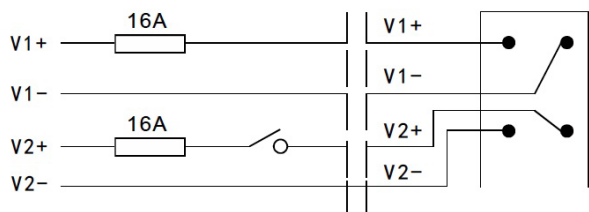
MG-393 Dust Cover



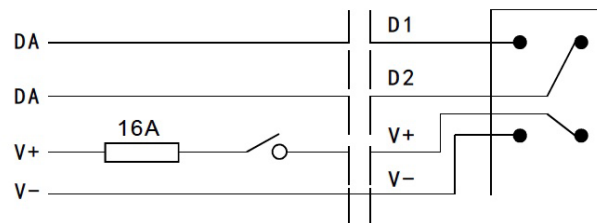
MG-317 Cap



Connection Diagram



1 phase 48V 16A Max + DALI



2 phases 48V 2x16A Max