

LED luminaire for Architectural Lighting

DOMoS-2 Series

LED luminaire Techlumen DOMoS-2 illuminates uniformly frames and openings on building facades.

It creates a very interesting optical effect, highlights the recesses and creates a sense of embossed during night observation.

It is designed to only illuminate the frame in which is installed, thanks to the precision optics, and becomes an excellent tool for architectural lighting designer.

It has high efficiency. Even the 3W version provides adequate lighting for frames 2.0m X 1,5m.

It is produced in 3W, 6W and 9W versions, the CCT ranges from 2700K (warm white) to 6500K (cool white).

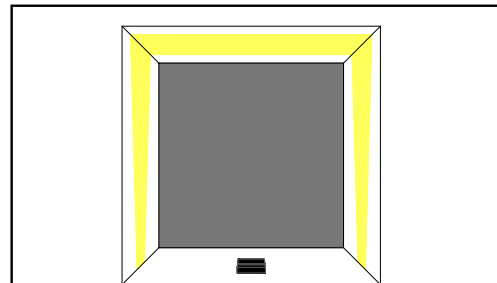
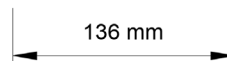
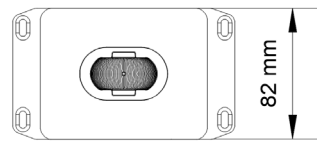
DOMoS is made of alluminium and painted with electrostatic paint in any RAL color.



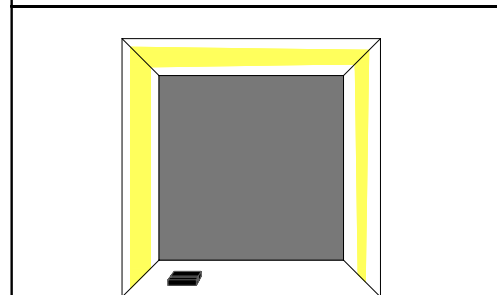
Manufactured in Greece



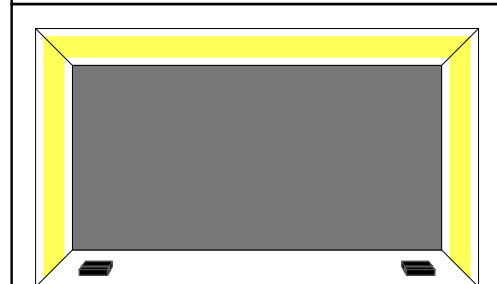
Dimensions



Central installation for symmetrical and uniform lighting distribution.



One edge installation for L shaped intensified lighting.

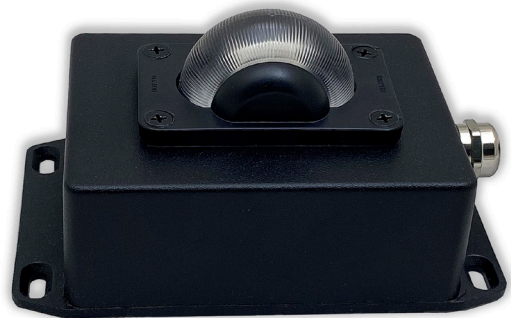
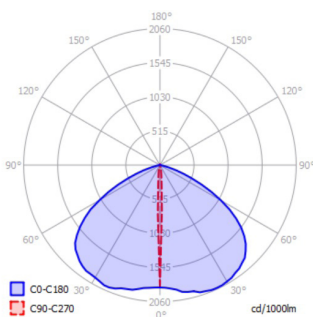


In oversized frames, L > 4m, installation of 2 DOMoS fittings, is recommended.

Model	DOMoS-2
Lumens	285 lm - 1580 lm
Power	3W, 6W, 9W
Ambient Temperature	-30 °C - + 50 °C
Efficiency	91 lm/W - 174 lm/W
Optics	175 ° /11 °
Power Factor	0,95
CRI	70 - 90
CCT	1750K - 6500K
IP Rating	IP65
Body	Aluminium
Finishing	Powder Coating / Any RAL
Dimensions	110mm x 82mm x 67mm
Weight	0.6 Kg
Warranty	5 years
Compliances:	CE EN 60598-1:2008 +A11:2009 EN 60598-2-2 EN 50581 EN 61000-3-2:2006 + A1:2009 + A2:2009 EN 61547:2009 EN 55015:2006 + A1:2007 +A2:2009 EN 61000-3-3:2008 EN 62471:2008 IEC 62778 EN 62493:2010 2011/65/EC (Rohs) 2009/125/EC (EuP) 2006/95/EC (LVD) 2004/108/EC (EMC)

DOMoS-2 Versions					
Watt	Code	CCT	CRI	Lumen	Lm/W
3W	DOMoS-2-927-3	2700	90	285	91
	DOMoS-2-827-3	2700	80	350	112
	DOMoS-2-930-3	3000	90	310	100
	DOMoS-2-830-3	3000	80	365	117
	DOMoS-2-840-3	4000	80	405	130
	DOMoS-2-850-3	5000	80	390	125
6W	DOMoS-2-750-3	5000	70	430	138
	DOMoS-2-927-6	2700	90	590	95
	DOMoS-2-827-6	2700	80	740	119
	DOMoS-2-930-6	3000	90	625	100
	DOMoS-2-830-6	3000	80	785	126
	DOMoS-2-940-6	4000	90	670	108
9W	DOMoS-2-840-6	4000	80	820	132
	DOMoS-2-850-6	5000	80	820	132
	DOMoS-2-750-6	5000	70	865	139
	DOMoS-2-827-9	2700	80	1332	146
	DOMoS-2-927-9	2700	90	1111	122
	DOMoS-2-830-9	3000	80	1388	153
	DOMoS-2-930-9	3000	90	1152	127
	DOMoS-2-835-9	3500	80	1430	157
	DOMoS-2-935-9	3500	90	1194	131
	DOMoS-2-840-9	4000	80	1444	159
	DOMoS-2-940-9	4000	90	1236	136
	DOMoS-2-750-9	5000	70	1580	174
DOMoS-2-850-9	5000	80	1486	163	
DOMoS-2-950-9	5000	90	1264	139	
DOMoS-2-757-9	5700	70	1525	168	
DOMoS-2-857-9	5700	80	1511	166	
DOMoS-2-765-9	6500	70	1553	171	
DOMoS-2-865-9	6500	80	1538	169	

Polar Intensity Diagram



AFOI TSIOLAKI OE

Industrial Zone of Thessaloniki
Greece
T: +302310 798 335
F: +302310 799 868

e-mail: info@techlumen.gr
www.techlumen.gr

 facebook.com/Techlumen

 [@Techlumen](https://twitter.com/Techlumen)

 linkedin.com/company/tsiolakis-construction