

WALL LED LIGHT

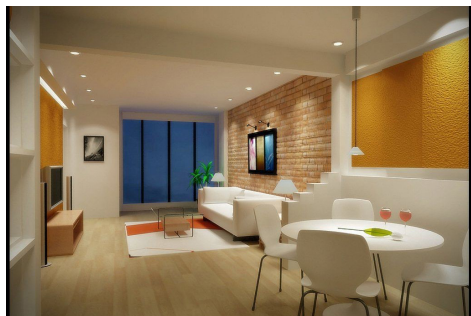
LINO

LINO LED wall fixtures have linear and thin profile and provide a uniform and efficient lighting.

They are made of aluminum and painted with powder coating in any RAL color

The models of LINO series provide lighting with color temperature of 3000K (warm) and 4000K (neutral white) with efficacy up to 181 lm / W.

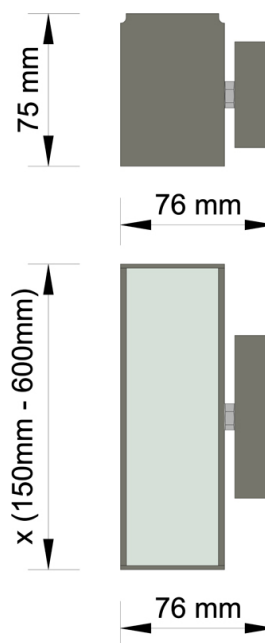
LINO have 5 year warranty.



Manufactured in Greece



Dimensions



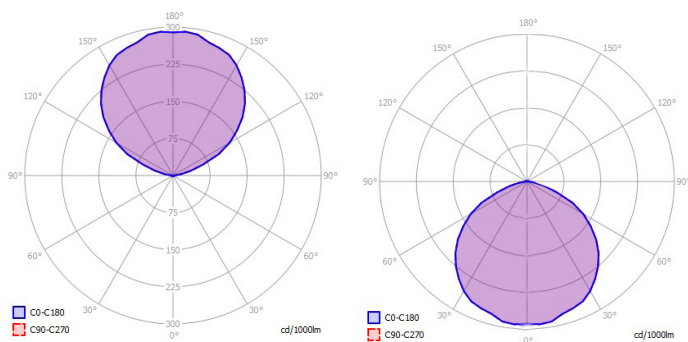
Applications

- Stores
- Restaurants
- Hotels
- Houses

Type	LINO
Luminus Power	489 lm - 2050 lm
Power	2.8W - 11.3W
Driver	Tridonic
LED Chip	Tridonic
Consumption	0.003 - 0.012 KWh/h
Ambient Temperature	-30 °C - + 40 °C
Efficacy	173 - 181 lm/W
Power Factor	0,95
CRI	80
CCT	3000K - 4000K
IP Rating	IP30
Material	Alluminium
Dimensions	75 mm x 76mm x (150 -600)mm
Weight	0.6 -1.3 Kg
Finishing	Powder coating - Any RAL
Warranty	5 years
Approvals:	CE, EN 60598-1, EN 13032.01 EN 61439-1:2009 EN 61543:1995 2006/95/EC 2004/108/EC EN 60598-2-1 Rohs REACH

LINO Versions					
Watt	Code	CCT	CRI	Lumen	Lm/W
2.8W	LINO15-T-WW-80-3	3000	80	489	173
	LINO15-T-W-80-3	4000	80	513	181
5.6W	LINO30-T-WW-80-6	3000	80	979	173
	LINO30-T-W-80-6	4000	80	1025	181
8.4W	LINO45-T-WW-80-9	3000	80	1468	173
	LINO45-T-W-80-9	4000	80	1538	181
11.3W	LINO60-T-WW-80-12	3000	80	1958	173
	LINO60-T-W-80-12	4000	80	2050	181

Polar Intensity Diagram



AFOI TSIOLAKI OE

Industrial Zone of Thessaloniki
Greece

T: +302310 798 335

F: +302310 799 868

e-mail: info@techlumen.gr

www.techlumen.gr



facebook.com/Techlumen



[@Techlumen](https://twitter.com/Techlumen)



linkedin.com/company/tsiolakis-construction